

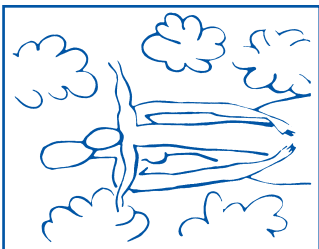
Non-Profit Org.  
U.S. Postage  
PAID  
Baltimore, MD  
Permit No. 5839

Mark Your Calendar for  
Spectrum of Developmental Disabilities XXXIII  
March 28-30, 2011

Office of Continuing Medical Education  
The Johns Hopkins University School of Medicine  
Turner 20, 720 Rutland Avenue  
Baltimore, MD 21205-2195



The Spectrum of  
Developmental Disabilities XXXII:  
"The Injured Brain"

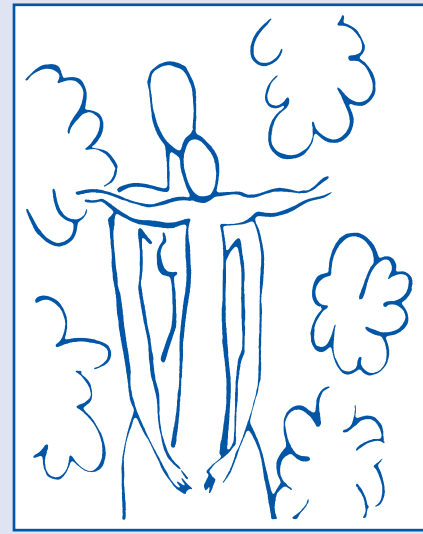


March 22-24, 2010  
The Johns Hopkins University  
School of Medicine  
Baltimore, Maryland

DATED MATERIAL



The Spectrum of  
Developmental Disabilities XXXII:  
"The Injured Brain"



March 22-24, 2010  
The Johns Hopkins University School of Medicine  
Thomas B. Turner Building  
Baltimore, Maryland

Jointly Sponsored by The Johns Hopkins University School of Medicine  
Division of Child Development, Department of Pediatrics  
and  
Kennedy Fellows Association  
Kennedy Krieger Institute

GENERAL INFORMATION

DESCRIPTION

The Spectrum of Developmental Disabilities activity will provide an interdisciplinary approach to the issues of brain injury in childhood. It will update the mechanisms of childhood brain injury, review the clinical syndromes (stroke, shaken baby, concussive injury and coma), present information on the interaction of injury and development, and current and proposed therapies for brain injury.

WHO SHOULD ATTEND

This activity is intended for pediatricians, neurodevelopmentalists, developmental-behavioral pediatricians, child neurologists, psychiatrists, neurologists, nurses, psychologists, speech-language pathologists, occupational therapists, physical therapists, educators, physician assistants and social workers.

OBJECTIVES

After attending this activity, the participant will demonstrate the ability to:

- Recognize that brain injury in childhood affects cognitive and behavioral function
- Distinguish clinical syndromes of brain injury
- Describe the effects of development on brain injury in childhood
- Define the continuum of rehabilitation services for children
- Discuss the mechanisms of brain injury in childhood

ACCREDITATION STATEMENT

This activity has been planned and implemented in accordance with the Essential Areas and policies of the Accreditation Council for Continuing Medical Education through the joint sponsorship of The Johns Hopkins University School of Medicine and The Kennedy Fellows Association. The Johns Hopkins University School of Medicine is accredited by the ACCME to provide continuing medical education for physicians.

CREDIT DESIGNATION STATEMENT

The Johns Hopkins University School of Medicine designates this educational activity for a maximum of 18.0 AMA PRA Category 1 Credit(s)<sup>™</sup>. Physicians should only claim credit commensurate with the extent of their participation in the activity.

OTHER CREDIT

Application for CME credit has been filed with the American Academy of Family Physicians. Determination of credit is pending.

This continuing medical education activity has been reviewed by the American Academy of Pediatrics and is acceptable for a maximum of 18.00 AAP credits. These credits can be applied toward the AAP CME/CPD Award available to Fellows and Candidate Members of the American Academy of Pediatrics.

American Academy of Physician Assistants accepts AMA Category 1 CME credit for the PRA from organizations accredited by ACCME.



The Kennedy Krieger Children's Institute is approved by the Continuing Education Board of the American Speech-Language-Hearing Association (ASHA) to provide continuing education activities in speech-language pathology and audiology. ASHA CE Provider approval does not imply endorsement of course content, specific products or clinical procedures.

This course is offered for 1.7 CEUs, Intermediate Level, Professional Area.

The Johns Hopkins University School of Medicine is authorized by the State Board of Examiners of Psychologists as a provider of continuing education. The Johns Hopkins University School of Medicine maintains responsibility for this program. A certificate for 18.0 CEUs will be awarded upon completion of this activity.

The Maryland Board of Social Work Examiners certifies that this program meets the criteria for 18.0 credit hours of Category 1 or 1.8 CEUs of continuing education for social workers and associates licensed in Maryland. The Johns Hopkins University School of Medicine is an approved sponsor of the Maryland Board of Social Work Examiners for continuing education credits for licensed social workers in Maryland.

The Johns Hopkins University School of Medicine is an AOTA Approved Provider of continuing education. AOTA does not endorse specific course content, products, or clinical procedures. 1.8 AOTA CEUs will be provided.

The Johns Hopkins University has approved this activity for 18.0 contact hours for non-physicians.

POLICY ON SPEAKER AND PROVIDER DISCLOSURE

It is the policy of The Johns Hopkins University School of Medicine of that the speaker and provider disclose real or apparent conflicts of interest relating to the topics of this educational activity, and also disclose discussions of unlabeled/unapproved uses of drugs or devices during their presentation(s). The Johns Hopkins University School of Medicine OCME has established policies in place that will identify and resolve all conflicts of interest prior to this educational activity. Detailed disclosure will be made in the activity handout materials.

REGISTRATION AND LOCATION

Monday, March 22, 2010 ♦ 8:00 - 8:45 a.m.  
Thomas B. Turner Building, The Johns Hopkins University School of Medicine  
720 Rutland Avenue, Baltimore, Maryland 21205

The Turner Building is located on Rutland Avenue at Monument Street. Directions and campus parking information are available on our website under the contact and travel section at [www.HopkinsCME.edu](http://www.HopkinsCME.edu). Handicapped parking is available in the nearby Rutland Garage. Johns Hopkins is smoke-free.

FEES

REGISTRATION CUT-OFF DATE: March 17, 2010

Methods of Payment: Payment by check or credit card must accompany the registration form prior to the activity. On-site payments by credit card only. Foreign payments must be by credit card or with a U.S. Dollar World Money Order. The registration fee includes instructional materials, continental breakfasts, refreshment breaks and lunches.

Registration Fee .....\$ 535

You will receive a confirmation by e-mail if you have provided your e-mail address. Otherwise confirmation will be sent by mail. If you have not received it by March 17, 2010, call (410) 502-9634 to confirm that you are registered. Certificates of attendance will be mailed by May 8, 2010.

The Johns Hopkins University reserves the right to cancel or postpone any activity due to unforeseen circumstances. In this event, the University will refund the registration fee but is not responsible for travel expenses. Additionally, we reserve the right to change the venue to a comparable venue. Under such circumstances registrants will be notified as soon as possible.

LATE FEE AND REFUND POLICY

A \$50 late fee applies to registrations received after 5:00 p.m. EST on March 17, 2010. A handling fee of \$50 will be deducted for cancellation. Refund requests must be received by fax or mail March 17, 2010. No refunds will be made thereafter. Transfer of registration to another Johns Hopkins conference in lieu of cancellation is not possible.

SOCIAL EVENT

A complimentary reception for registrants and faculty will be held Monday, March 22, 2010, 5:10 - 6:00 p.m. Guests are invited to attend at an additional charge of \$20. Please indicate your attendance on the activity registration form.

HOTEL AND TRAVEL INFORMATION

Tremont Plaza Hotel (800) 873-6668  
222 Saint Paul Place (410) 727-2222  
Baltimore, Maryland 21202-2087 FAX: (410) 685-4216

Hotel Reservation Cut-Off Date: February 21, 2010

Web Site: [www.tremontsuitehotels.com](http://www.tremontsuitehotels.com)

Located just a short walk from Baltimore's Inner Harbor, the Tremont Plaza is an all-suite hotel, each unit with complete kitchens and separate sleeping quarters. Call the hotel directly to make your reservation. Specify that you are attending the Johns Hopkins Developmental Disabilities activity to receive the special room rate of \$139 single/double, plus tax. Complimentary transportation will be provided to the activity. Both valet and self-parking are available at an additional charge. Check-in time is 3:00 p.m.

Call United Airlines at (800) 521-4041 for discounted rates and refer to Meeting ID Number 549TJ. Mileage Plus® miles are available.

ACTIVITY EVALUATION

An activity evaluation form will be available to attendees to evaluate each session and each speaker's presentation, as well as to identify future educational needs.

OUTCOMES SURVEY

An Outcomes Survey will be sent to all physician attendees within three months post activity to assist us in determining what impact this activity had on the attendee's practice.

EMERGENCY CALLS

During the days of this activity only, March 22-24, 2010, direct emergency calls to the Hopkins registration desk, (410) 955-3673. Messages will be posted for participants.

AMERICANS WITH DISABILITIES ACT

The Johns Hopkins University School of Medicine fully complies with the legal requirements of the ADA and the rules and regulations thereof. Please notify us if you have any special needs.

TO REGISTER OR FOR FURTHER INFORMATION

Register Online  
Register by Phone (credit card only)  
Register by Fax  
Confirmation/Certificates  
General Information  
E-mail the Office of CME

[www.HopkinsCME.edu](http://www.HopkinsCME.edu)  
(410) 502-9634  
(866) 510-7088  
(410) 502-9634  
(410) 955-2959  
[cmenet@jhmi.edu](mailto:cmenet@jhmi.edu)

